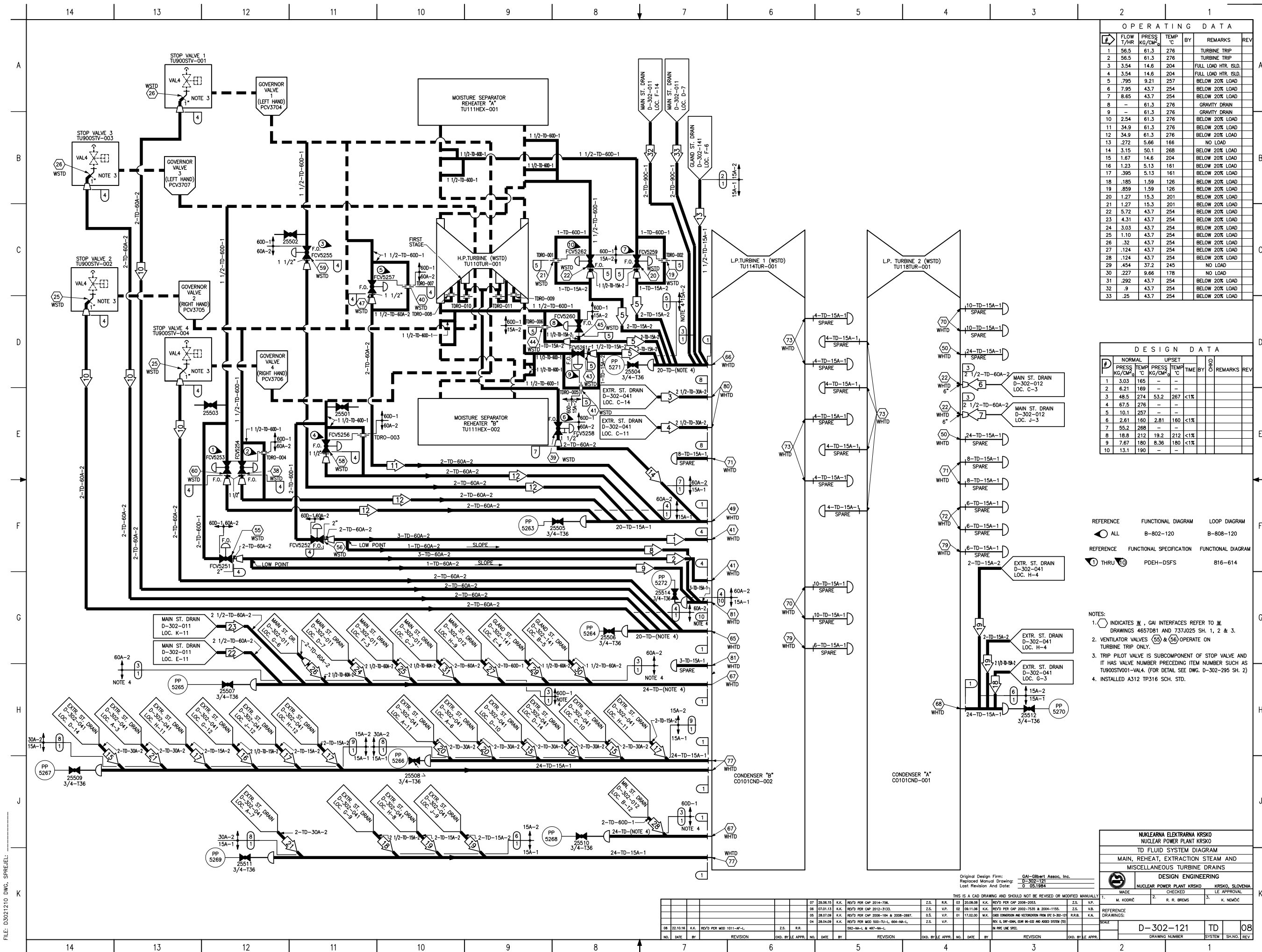
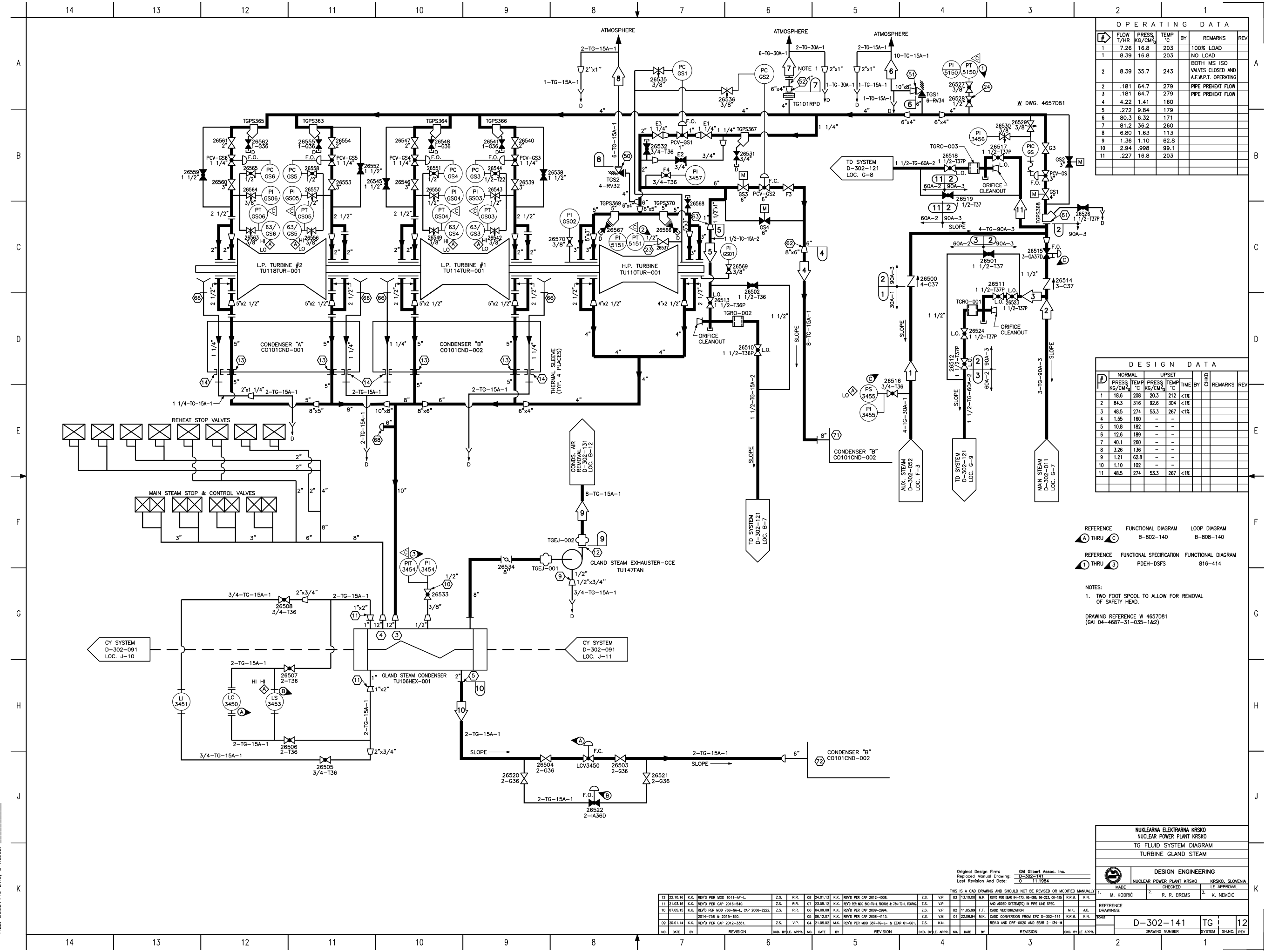
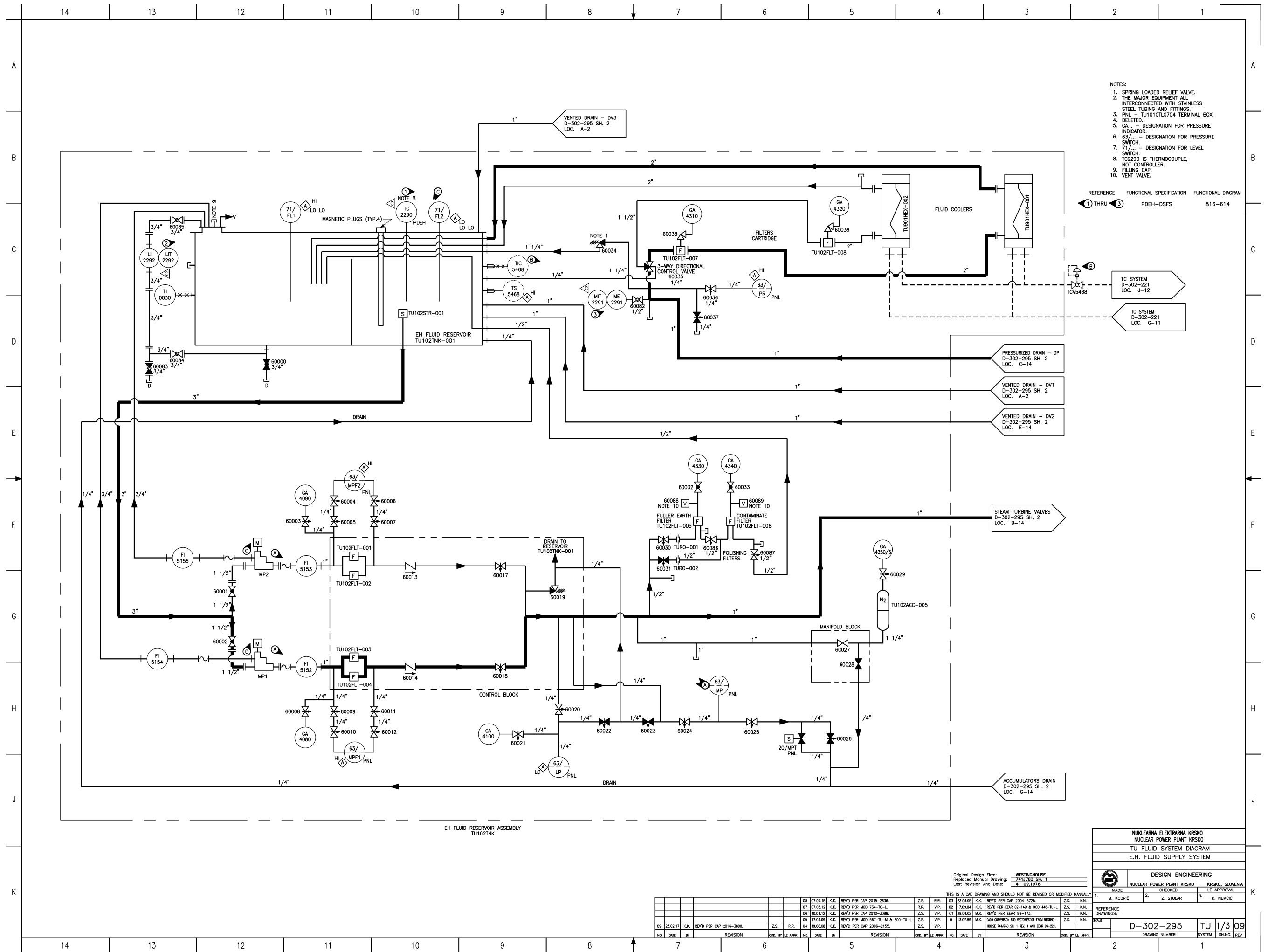


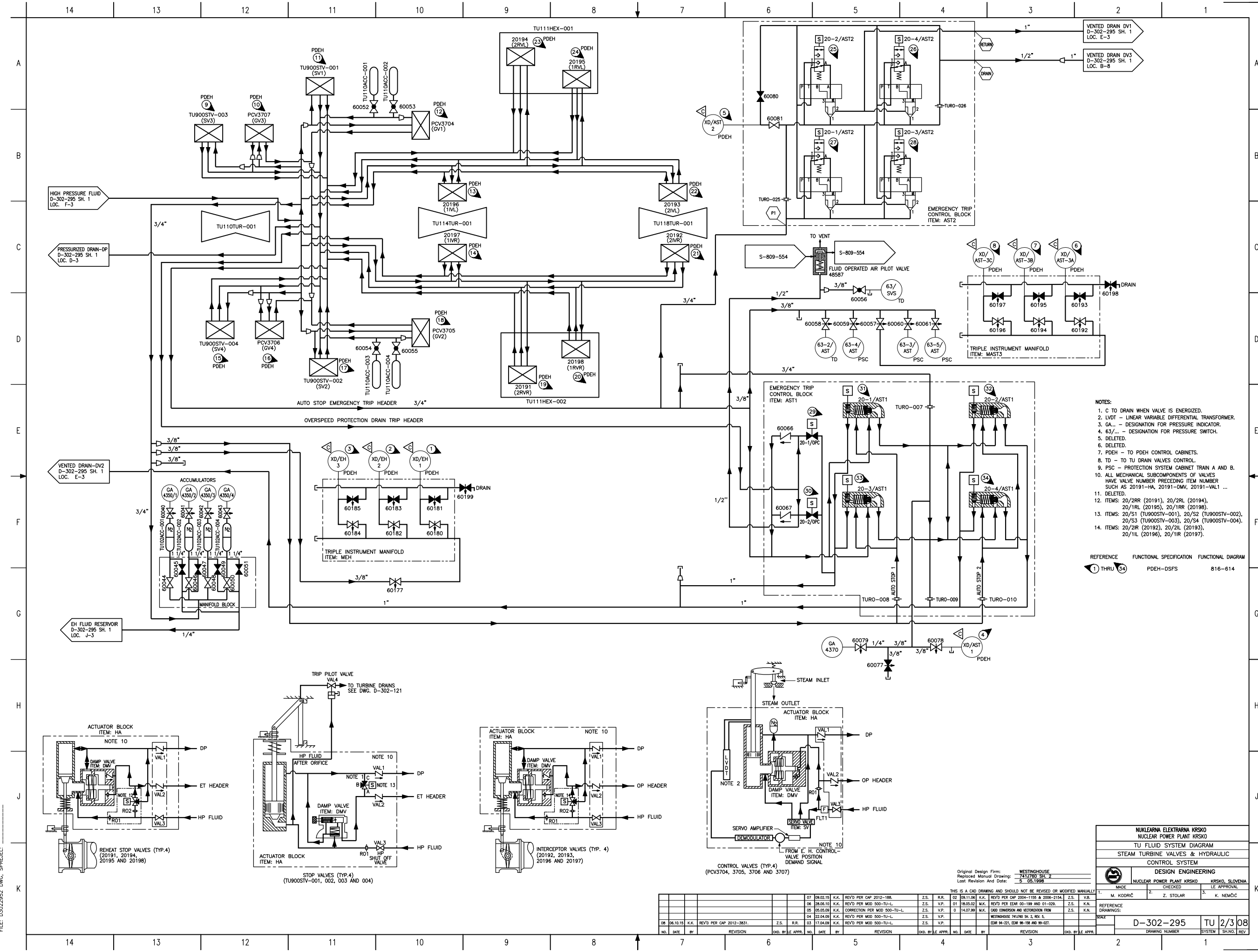
Appendix C: Fluid System Diagrams: D-312-121 Main, Reheat, Extraction Steam and Misc. Turbine Drains





FILE: D3021410 DWG, SPREJEL:

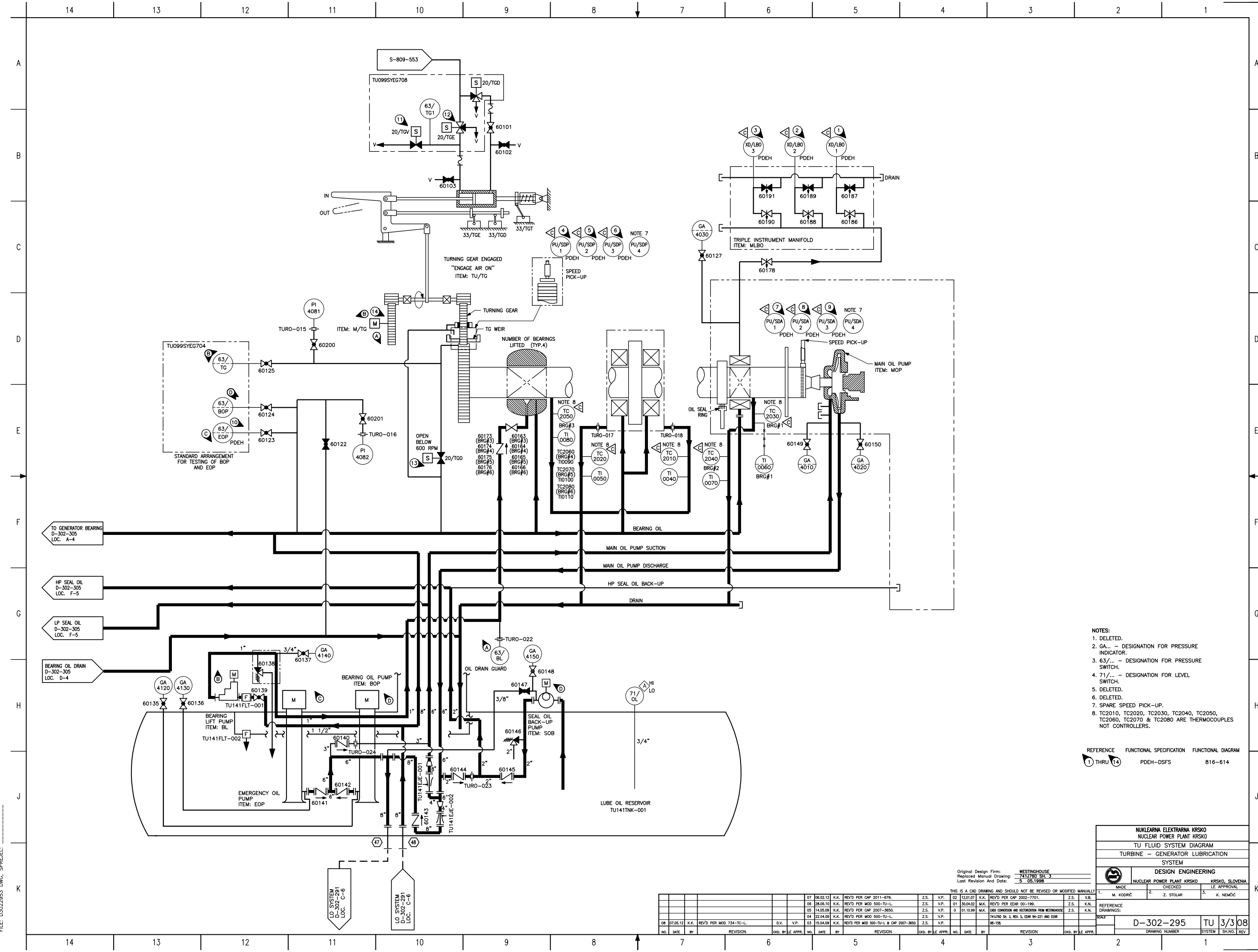




FILE: D3022952.DWG, SPREJEL:

THIS IS A CAD DRAWING AND SHOULD NOT BE REVISED OR MODIFIED MANUALLY			
Original Design Firm:	WESTINGHOUSE	7417780 SH. 2	5.05.1998
Revised Manual Drawing:	7417780 SH. 2	5.05.1998	
Last Revision And Date:	5.05.1998		
NO.	DATE	BY	REVISION
07	09.02.10	K.K.	REV'D PER CAP 2012-198.
08	18.05.10	K.K.	REV'D PER MOD 500-TU-L.
09	05.05.09	K.K.	CORRECTION PER MOD 500-TU-L.
10	22.04.09	K.K.	REV'D PER MOD 500-TU-L.
11	17.04.09	K.K.	REV'D PER MOD 500-TU-L.
12	17.04.09	K.K.	REV'D PER MOD 500-TU-L.
13	17.04.09	K.K.	REV'D PER MOD 500-TU-L.
14	17.04.09	K.K.	REV'D PER MOD 500-TU-L.
15	17.04.09	K.K.	REV'D PER MOD 500-TU-L.
16	17.04.09	K.K.	REV'D PER MOD 500-TU-L.
17	17.04.09	K.K.	REV'D PER MOD 500-TU-L.
18	17.04.09	K.K.	REV'D PER MOD 500-TU-L.
19	17.04.09	K.K.	REV'D PER MOD 500-TU-L.
20	17.04.09	K.K.	REV'D PER MOD 500-TU-L.
21	17.04.09	K.K.	REV'D PER MOD 500-TU-L.
22	17.04.09	K.K.	REV'D PER MOD 500-TU-L.
23	17.04.09	K.K.	REV'D PER MOD 500-TU-L.
24	17.04.09	K.K.	REV'D PER MOD 500-TU-L.
25	17.04.09	K.K.	REV'D PER MOD 500-TU-L.
26	17.04.09	K.K.	REV'D PER MOD 500-TU-L.
27	17.04.09	K.K.	REV'D PER MOD 500-TU-L.
28	17.04.09	K.K.	REV'D PER MOD 500-TU-L.
29	17.04.09	K.K.	REV'D PER MOD 500-TU-L.
30	17.04.09	K.K.	REV'D PER MOD 500-TU-L.
31	17.04.09	K.K.	REV'D PER MOD 500-TU-L.
32	17.04.09	K.K.	REV'D PER MOD 500-TU-L.
33	17.04.09	K.K.	REV'D PER MOD 500-TU-L.
34	17.04.09	K.K.	REV'D PER MOD 500-TU-L.

NUKLEARNA ELEKTARNA KRSKO NUCLEAR POWER PLANT KRSKO			
TU FLUID SYSTEM DIAGRAM			
STEAM TURBINE VALVES & HYDRAULIC CONTROL SYSTEM			
DESIGN ENGINEERING			
MADE	NUCLEAR POWER PLANT KRSKO	KRSKO, SLOVENIA	IE APPROVAL
1.	M. KODIČ	2.	Z. STOLAR
3.	K. NEMČIČ		
REFERENCE DRAWINGS:			
SCALE	D-302-295	TU	2/3 08
DRAWING NUMBER	SYSTEM	SH.NO.	REV.



- NOTES:
1. DELETED.
 2. GA... - DESIGNATION FOR PRESSURE INDICATOR.
 3. 63/... - DESIGNATION FOR PRESSURE SWITCH.
 4. 71/... - DESIGNATION FOR LEVEL SWITCH.
 5. DELETED.
 6. DELETED.
 7. SPARE SPEED PICK-UP.
 8. TC2010, TC2020, TC2030, TC2040, TC2050, TC2060, TC2070 & TC2080 ARE THERMOCOUPLES NOT CONTROLLERS.

REFERENCE 1 THRU 14 FUNCTIONAL SPECIFICATION PDEH-DSFS FUNCTIONAL DIAGRAM 816-614

NUKLEARNA ELEKTRARNA KRSKO NUCLEAR POWER PLANT KRSKO		
TU FLUID SYSTEM DIAGRAM		
TURBINE - GENERATOR LUBRICATION SYSTEM		
DESIGN ENGINEERING		
MADE	CHECKED	IE APPROVAL
M. KODRČ	Z. STOLAR	K. NEMČIČ
REFERENCE DRAWINGS:		
D-302-295 TU 3/3 08		
DRAWING NUMBER SYSTEM SHNO. REV		

Original Design Firm: WESTINGHOUSE														
Replaced Manual Drawing: 7417780 SH. 3														
Last Revision And Date: 5 05.1998														
THIS IS A CAD DRAWING AND SHOULD NOT BE REVISED OR MODIFIED MANUALLY.														
				07	06.02.12	K.K.	REV'D PER CAP 2011-079.	Z.S.	V.P.	02	12.01.07	K.K.	REV'D PER CAP 2002-7701.	Z.S.
				08	08.06.10	K.K.	REV'D PER MOD 500-TU-L.	Z.S.	V.P.	01	30.04.02	K.K.	REV'D PER LEAF 05-109.	Z.S.
					14.05.09	K.K.	REV'D PER CAP 2007-3650.	Z.S.	V.P.	01	01.10.19	K.K.	OVER ORDER AND WESTINGHOUSE HAD WESTINGHOUSE	Z.S.
				09	22.04.09	K.K.	REV'D PER MOD 500-TU-L.	Z.S.	V.P.				PLATE SH. 3 REV. 5, DOWN SH. 10 AND ELEM	
					15.04.09	K.K.	REV'D PER MOD 500-TU-L & CAP 2007-3650.	Z.S.	V.P.				98-15A.	
08	07.05.12	K.K.	REV'D PER MOD 734-TC-L.	D.V.	V.P.									
NO.	DATE	BY	REVISION	NO.	DATE	BY	REVISION	NO.	DATE	BY	REVISION	NO.	DATE	BY